

MONTHLY MEMBERSHIP PROGRESS REPORT

LOCATION AUSTRALIA

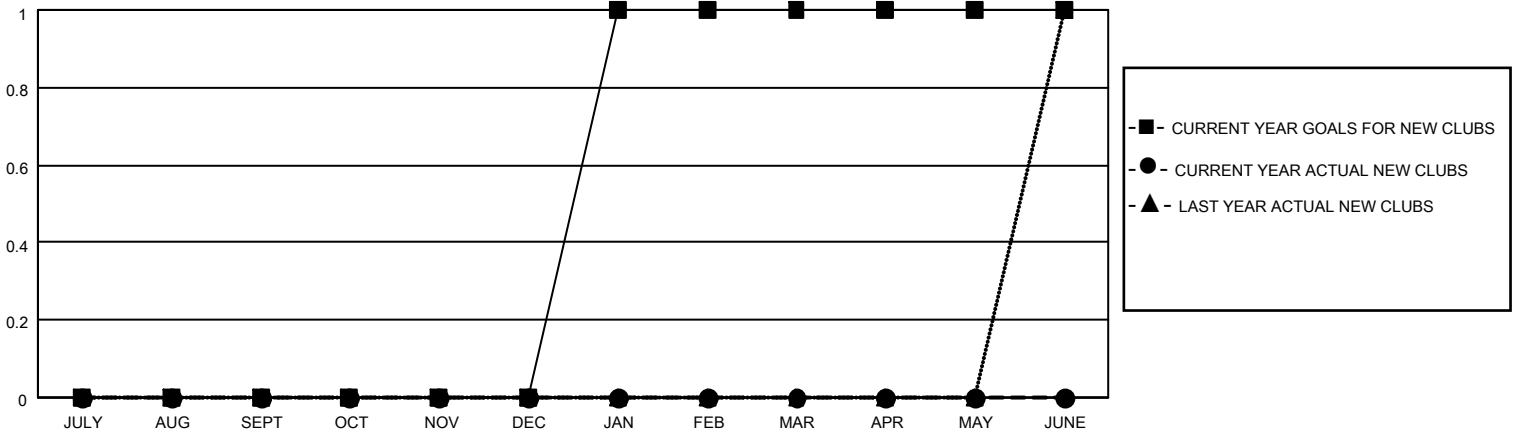
District 201V6

Results as of: 4/30/2022

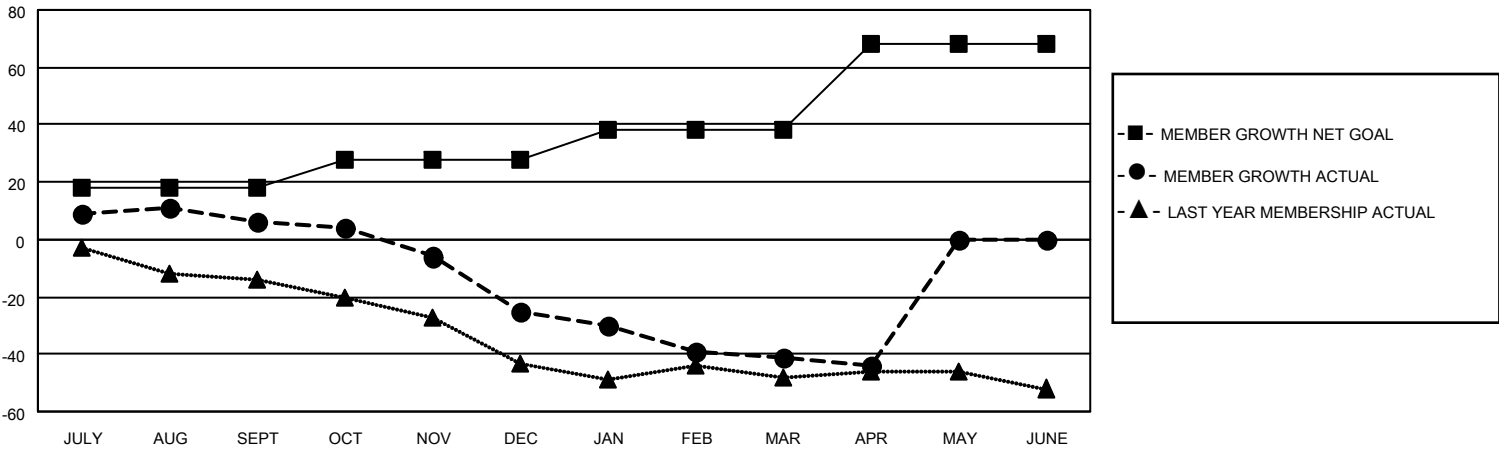
Clubs			
RESULTS FOR 2021-2022			
QUARTER	NEW CLUB GOAL	NEW CLUBS	DROPPED CLUBS
JULY/AUG/SEPT	0	0	1
OCT/NOV/DEC	0	0	1
JAN/FEB/MAR	1	0	0
APR/MAY/JUNE	0	0	0

Members			
RESULTS FOR 2021-2022			
QUARTER	MEMBER GROWTH NET GOAL	MEMBER GROWTH ACTUAL	DROPPED MEMBERS ACTUAL (including transfers)
JULY/AUG/SEPT	18	15	8
OCT/NOV/DEC	10	12	41
JAN/FEB/MAR	10	22	35
APR/MAY/JUNE	30	8	9

GOALS AND ACTUAL NEW CLUBS CUMULATIVE



GOALS AND ACTUAL MEMBERS CUMULATIVE



DROPPED CLUBS: 2

24 CLUBS OF 57 ADDED 1 OR MORE NEW MEMBERS

GENDER DISTRIBUTION

DROPPED MEMBERS

DECEASED	14
CLUB CANCELLED	5
OTHER	74
TOTAL	93

[CLICK HERE FOR CUMULATIVE MEMBERSHIP DATA](#)

MALE	744 (68.32%)
FEMALE	345 (31.68%)
NON BINARY	0 (0.00%)
PREFER NOT TO ANSWER	0 (0.00%)

TOTAL FAMILY UNIT MEMBERS 134

FAMILY MEMBERS PAYING HALF DUES 67